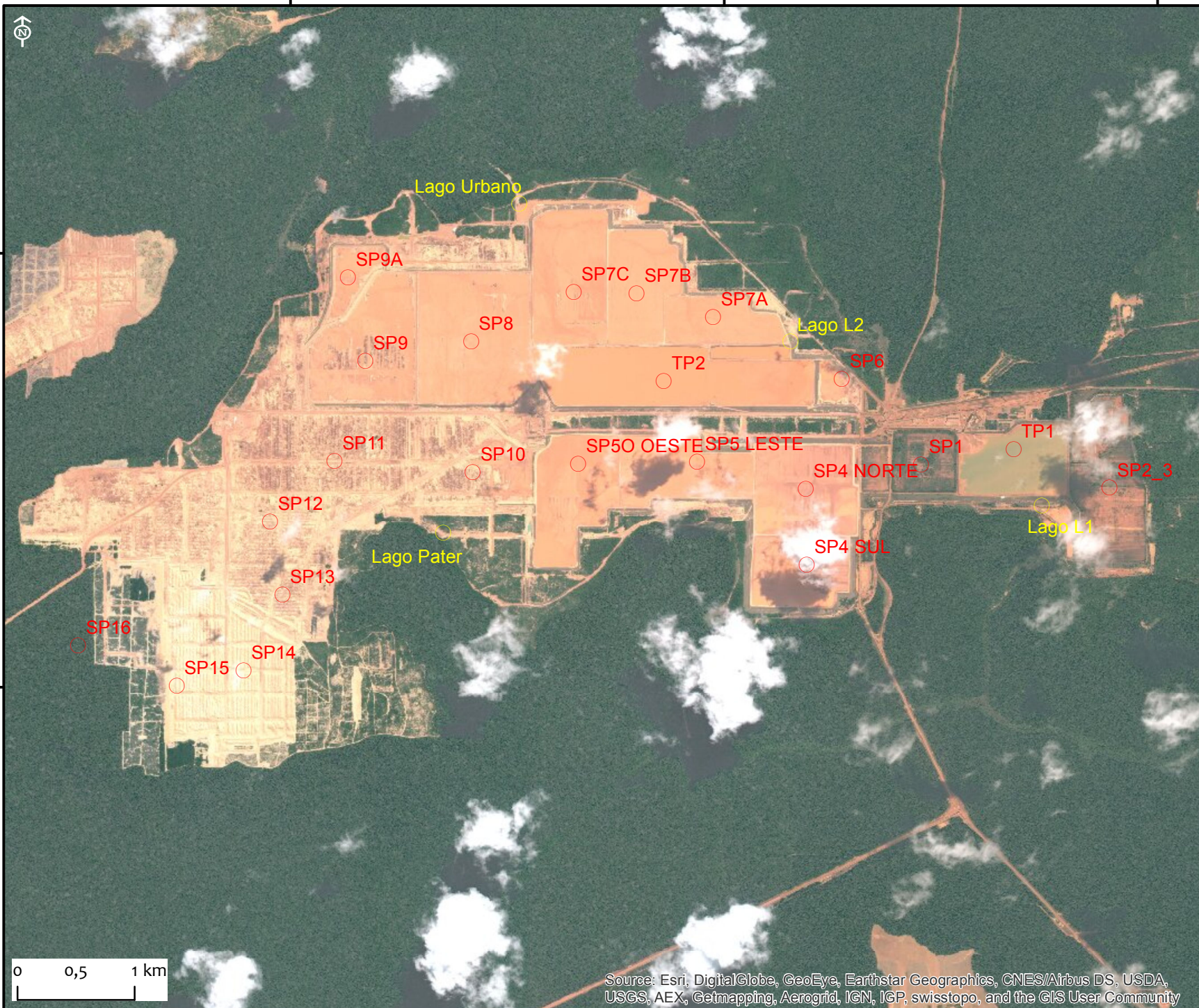


Barragens da Mineração Rio do Norte – Oriximiná – Pará – Brasil



56°28'0"W

56°26'0"W

56°24'0"W



Legenda

-  Barragem MRN
-  Lagos da MRN

Elaborado em julho de 2016

Fontes:
CPI-SP, 2015; DNPM, 2016
Imagem de Satélite Esri (2016)



Comissão Pró-Índio
de São Paulo

Source: Esri, DigitalGlobe, GeoEye, Earthstar Geographics, CNES/Airbus DS, USDA, USGS, AEX, Getmapping, Aerogrid, IGN, IGP, swisstopo, and the GIS User Community

56°28'0"W

56°26'0"W

56°24'0"W

1°40'0"S

1°40'0"S

1°42'0"S

1°42'0"S